



Park Court, Harlow, CM20 2PY

Geoffrey Matthew Estates are pleased to present this charming ground floor apartment located in the desirable area of Park Court, Harlow. This delightful property boasts two spacious double bedrooms, making it an ideal choice for couples, small families, or individuals seeking extra space.

The apartment has recently been redecorated, offering a fresh and inviting atmosphere that is ready for you to move in and make it your own. Its proximity to Harlow Town Centre ensures that you will have easy access to a variety of shops, restaurants, and local amenities, enhancing your everyday living experience.

Available for immediate occupancy, this property presents a wonderful opportunity for those looking to settle in a well-connected area.

£1,400 Per Calendar Month

Park Court, Harlow, CM20 2PY

 2

 null

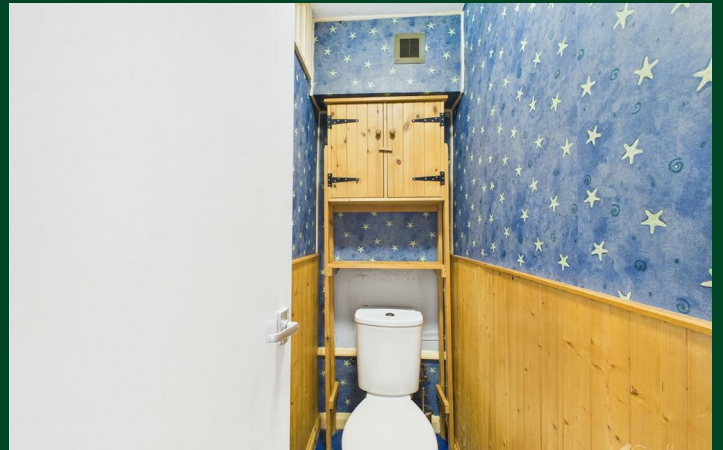
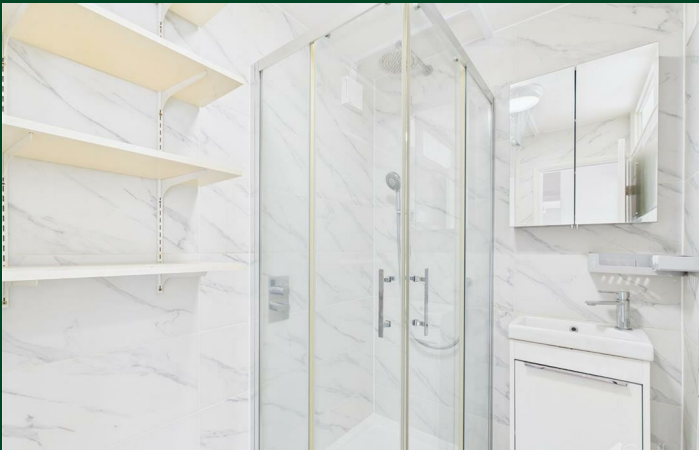
 null

 C

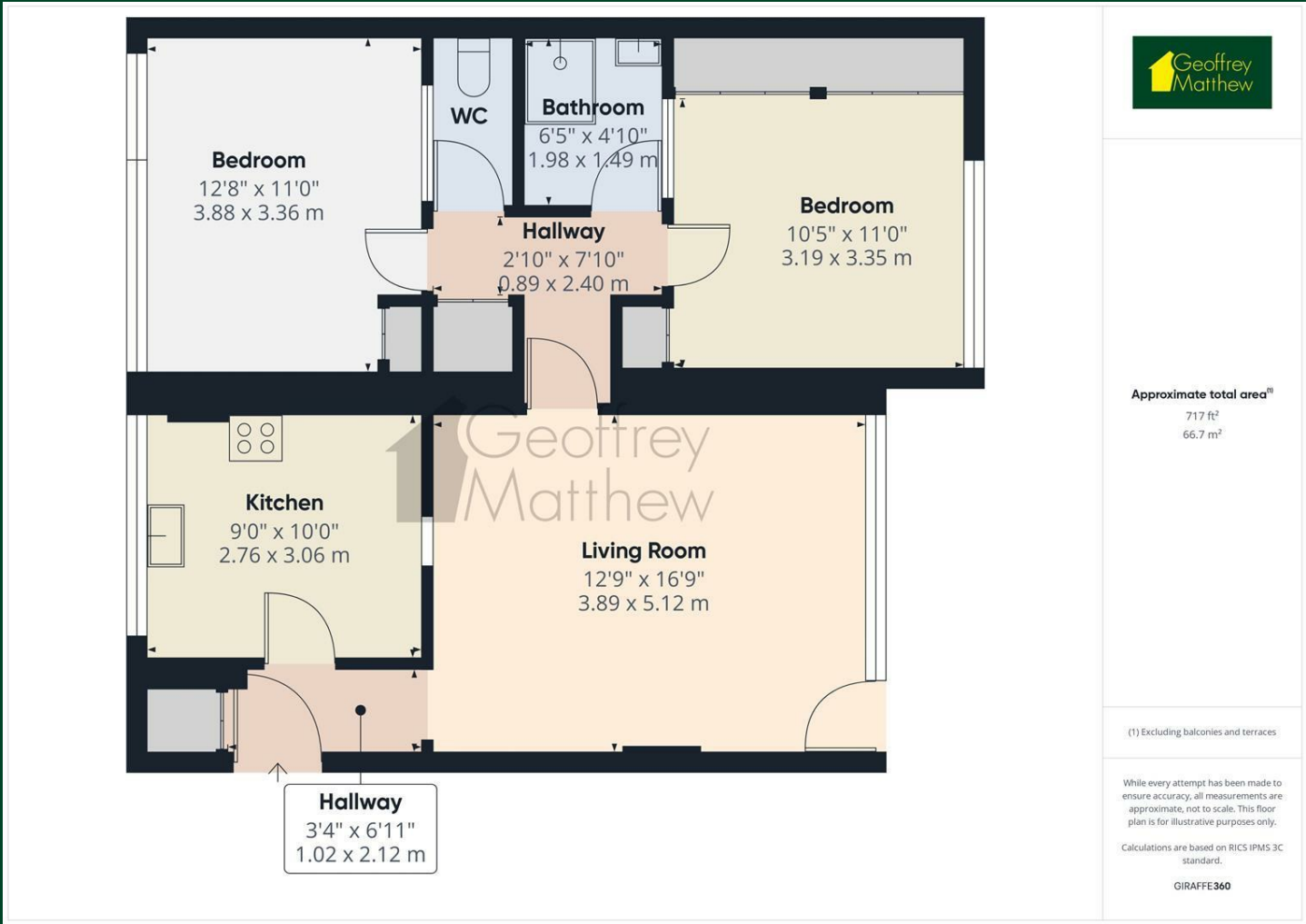
- Ground Floor Flat
 - Private Outdoor Area
- Two Double Bedrooms
 - EPC Band C
- Close to Harlow Town Centre
 - Council Tax Band B



[Directions](#)



Floor Plan



Council Tax Details

Harlow Band B

These particulars, whilst believed to be accurate are set out as a general outline only for guidance and do not constitute any part of an offer or contract. Intending purchasers should not rely on them as statements of representation of fact, but must satisfy themselves by inspection or otherwise as to their accuracy. No person in this firms employment has the authority to make or give any representation or warranty in respect of the property.

